

HAUS TOOLBOX

Designed by Hannes & Fritz for Normann Copenhagen



normann
COPENHAGEN

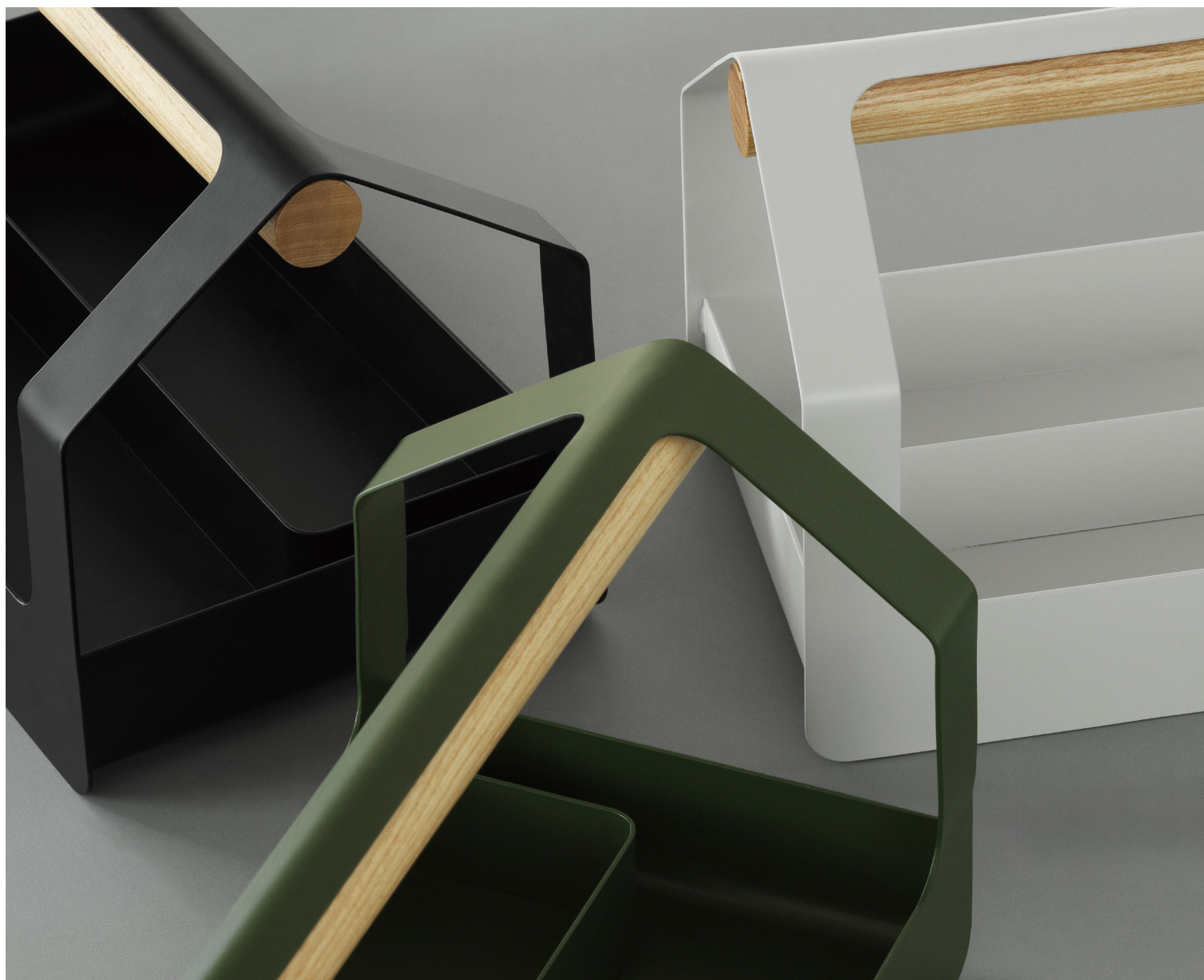


INTRODUCING A TIMELESS TOOLBOX FOR MODERN ORGANIZATION

Normann Copenhagen presents Haus Toolbox, a versatile and thoughtfully designed storage solution created by Swiss-German design duo Hannes & Fritz. Blending industrial durability with a refined aesthetic, Haus Toolbox is an essential organizational piece for a wide variety of uses—whether in the home, workspace, or studio.

With cues from classic metal toolboxes, the design embraces a minimal yet highly functional approach. Taking its name from the German word for “house,” Haus Toolbox embraces an open, architectural structure that provides ample storage without rigid compartments, allowing users to arrange their essentials freely. Crafted from powder coated steel, the toolbox reinforces a raw, industrial appeal. A smooth wooden handle crafted from adds a warm, tactile contrast, ensuring a comfortable grip, effortless portability and a sense of familiarity.

“We wanted to create an object that is as practical as it is enduring—something that doesn’t overcomplicate function but instead allows users to make it their own,” explain the duo. “Haus Toolbox embodies the spirit of adaptability, whether it holds tools, stationery, toiletries or even kitchen essentials. Developed through an iterative design process, Haus Toolbox is the first small-scale accessory by Hannes & Fritz, expanding their creative portfolio beyond furniture. The final design embodies their shared vision: an intuitive, functional, and enduring object. With its clean lines and high-quality materials, Haus seamlessly aligns with Normann Copenhagen’s commitment to durable and timeless design.







Haus Toolbox
Light Grey



Haus Toolbox
Dark Green



Haus Toolbox
Black

Color: Light Grey, Dark Green and Black

Material: Frame: Powder coated steel, Handle: ash wood

Price: Click [here](#) to see the pricelist in all currencies



CONNECTING PEOPLE AND SPACES

Since Normann Copenhagen's foundation in 1999, our ambition has been to challenge conventional thinking and make the ordinary extraordinary through great design.

By combining the craftsmanship, functionality and endurance characterized by our Danish design heritage with modern silhouettes and durable materials, we aim to create original products in a contemporary design that withstand the test of time. We believe in uniting people and spaces across the world and improving the quality of people's lives through the power of great design.

Our products combine functionality and design and accommodate the diversity of needs of modern life in residential and professional interiors alike.

Press info

For high resolution images and press releases
for all products and events in English,
German, French, Italian and Danish go to
normann-copenhagen.presscloud.com

For further information or loan requests for editorial
photoshoots please contact:

Anna Willerslev
Brand Activation Manager
anna@normann-copenhagen.com

normann

C O P E N H A G E N